

## Cool Design, Cool Benefits

- One 10,000 Btu/hr Module, Multiple Applications
- Compact unit is 50% smaller than competitors
- Provide cost-effective, efficient and mobile cooling
- Fits into a standard 19-inch rack, occupying 13U of rack space
- UL Listed to be hung in ceiling plenums
- Automatic restart function for power outages
- Quick and easy installation
- Draws less than 8 amps in most applications

### Markets

- IT Environments
- Industrial
- Offices/Schools
- Health Care
- Mobile/Rental
- Events

### Cooling Applications

- Equipment
- People
- Processes

# CoolCube 10

## Modular Air Conditioning for IT Environments

The **CoolCube 10** is the only air conditioning solution in the industry that changes to fit your individual needs. With its revolutionary modular design the **CoolCube 10** easily adapts to virtually any application. The compact, 10,000 Btu/hr module can be rack-mounted, hung from the ceiling, stacked for capacity or redundancy, or used as a stand-alone portable unit – simply by adding the respective accessory kit.

The **CoolCube 10's** modularity gives it the ability to efficiently cool hot spots at their source making it the number one choice for IT environments.



## Ideal for Server & Telecommunication Rooms

Whether your telecommunications room is a converted coat closet or a mechanical room, the versatile **CoolCube 10** is ideal for any location – easily fitting into the infrastructure of any building. The **CoolCube 10**



protects expensive IT investments from overheating. Studies have shown every 10°C rise in nominal temperatures results in a 50% reduction in the lifetime and long-term reliability of IT hardware. The **CoolCube 10** operates down to 65°F, creating the perfect environment for your IT equipment.

Cool Overheated Rooms from Above, Below, or Within



**COOLCUBE**

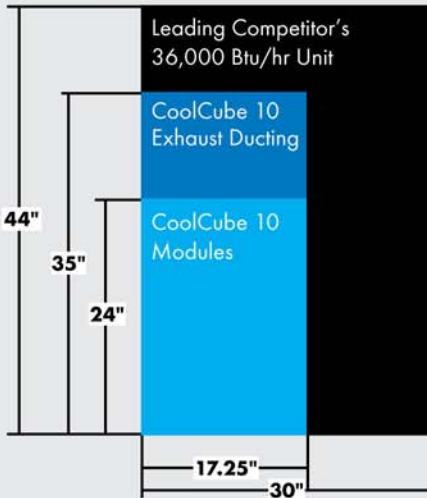
# Move It. Hang It. Rack It. Stack It.

## Stack and Save!

Stacking **COOLCUBE 10** Modules allows you to SAVE valuable computer room FLOORSPACE.

- 55% Reduction in Footprint
- Redundant A/C System
- Operates on 115 Volts
- Generator Friendly

## Footprint

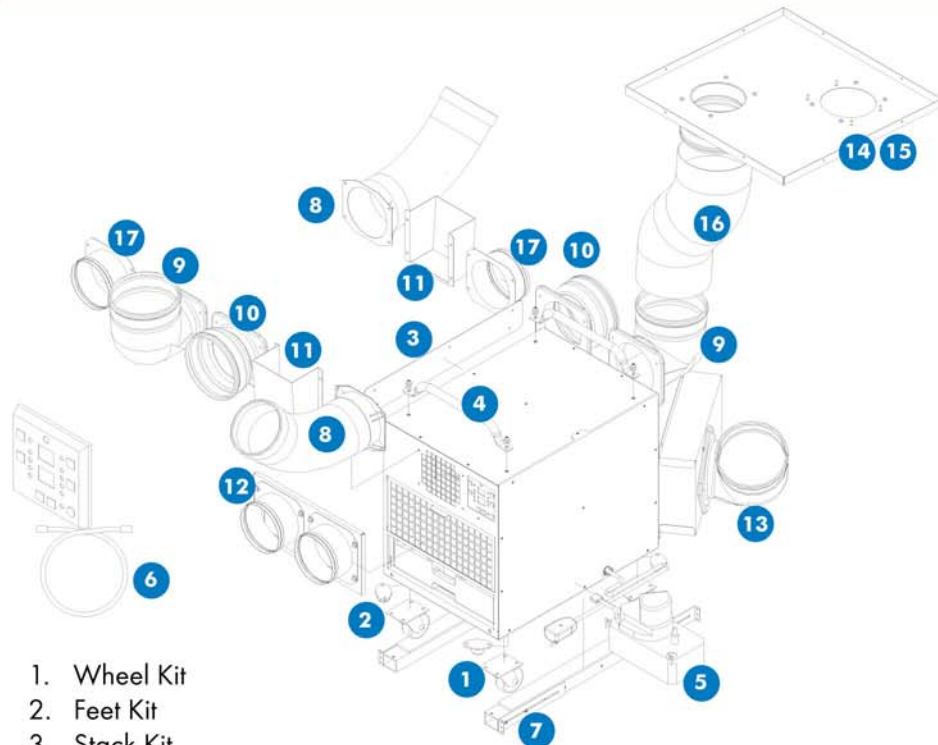


## CoolCube 10 Specifications

<b>Cooling Capacity</b>	10,000 Btu/hr
<b>Voltage Requirement</b>	115 VAC
<b>Recommended Fuse</b>	15 amps
<b>Power Consumption</b>	1.15 kW
<b>Power Cord Length</b>	10 feet
<b>NEMA Plug Configuration</b>	5-15P
<b>Air Flow — Evaporator (High/Med/Low)</b>	325/310/290 CFM
<b>Air Flow — Condenser</b>	400 CFM
<b>Sound Level</b>	55 dB (ducted)
<b>Condensate Tank Capacity</b>	2.5 gallons
<b>Operating Range (@50% RH)</b>	65-95°F Min-Max
<b>Dimensions (WxDxH)</b>	17.25" x 24" x 20"
<b>Net Weight/Shipping Weight</b>	110/135 lbs.



## Accessories



1. Wheel Kit
2. Feet Kit
3. Stack Kit
4. Handle Kit
5. Condensate Pump Kit
6. Remote Control Kit
7. Rack Kit
8. Six-Inch Nozzle
9. 90° Eight-Inch Flange
10. Eight-Inch Flange
11. Rack Diffuser
12. Evaporator Plenum
13. Condenser Plenum
14. Ceiling Tile Kit - (1) Duct
15. Ceiling Tile Kit - (2) Ducts
16. Eight-Inch Duct
17. Six-Inch Flange

**Phone: 866-907-2665**  
**www.elitecooling.net**